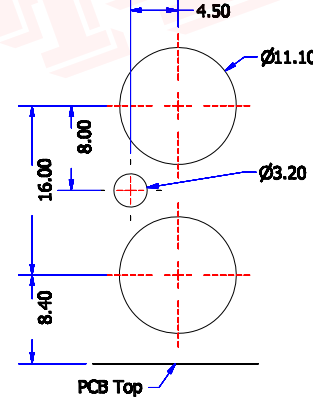
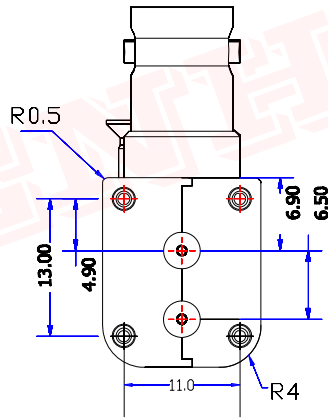
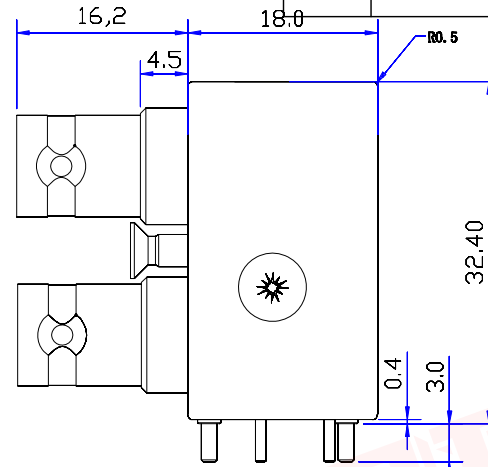
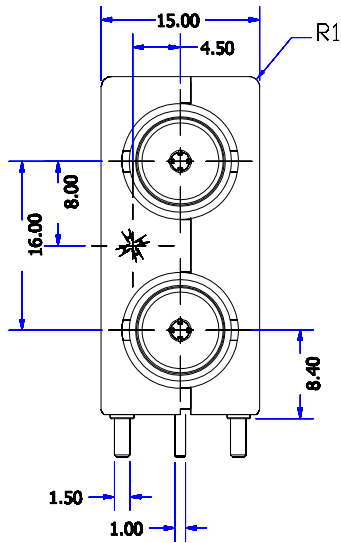




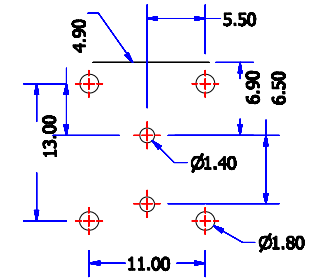
Product NO.

RHT-610-1067

REV	DESCRIPTION	DWN	DATE	APPROVEN
A	First issue	Gavin	2018/11/21	JIM. KING



Panel Cut Out



PCB Layout

Specifications

Impedance:50 Ohms

Frequency Range:DC~3G

VSWR:1.3MAX

Working Voltage:500V rms @ sea level

Insulation Resistance:5000 Ohms min

Temperature Range:-55°C TO +155°C

Relative Temperature:≤95%(40° C±2° C)

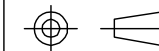
Drawings products are in line with ROHS standards

NO	DESCRIPTION	MATERIAL	FINISH	QTY
5				
4	INSULATING PLASTIC	ABS	BLACK	2
3	CONTACT PIN	BRASS	NICKEL	2
2	INSULATING	TEFLON	NATURAL	2
1	BODY	BRASS	NICKEL	2

-TOLERANCES-
UNLESS OTHERWISE
SPECIFIED



RENHOTEC GROUP



PART DESCRIPTION:
BNC CONNECTOR DNN

UNLESS OTHERWISE SPECIFIED
TOLERANCES FOR MILLIMETERS ARE:
0.5 - 8mm ± 0.10mm
8 - 30mm ± 0.15mm
30 - 120mm ± 0.20mm

Appd: JIM. KING

P/N: RHT-610-1067

Check:

Date	Scale	Unit	Type	Page
2018. 11. 21	Free	MM	Z	1/1

Draw: Gavin